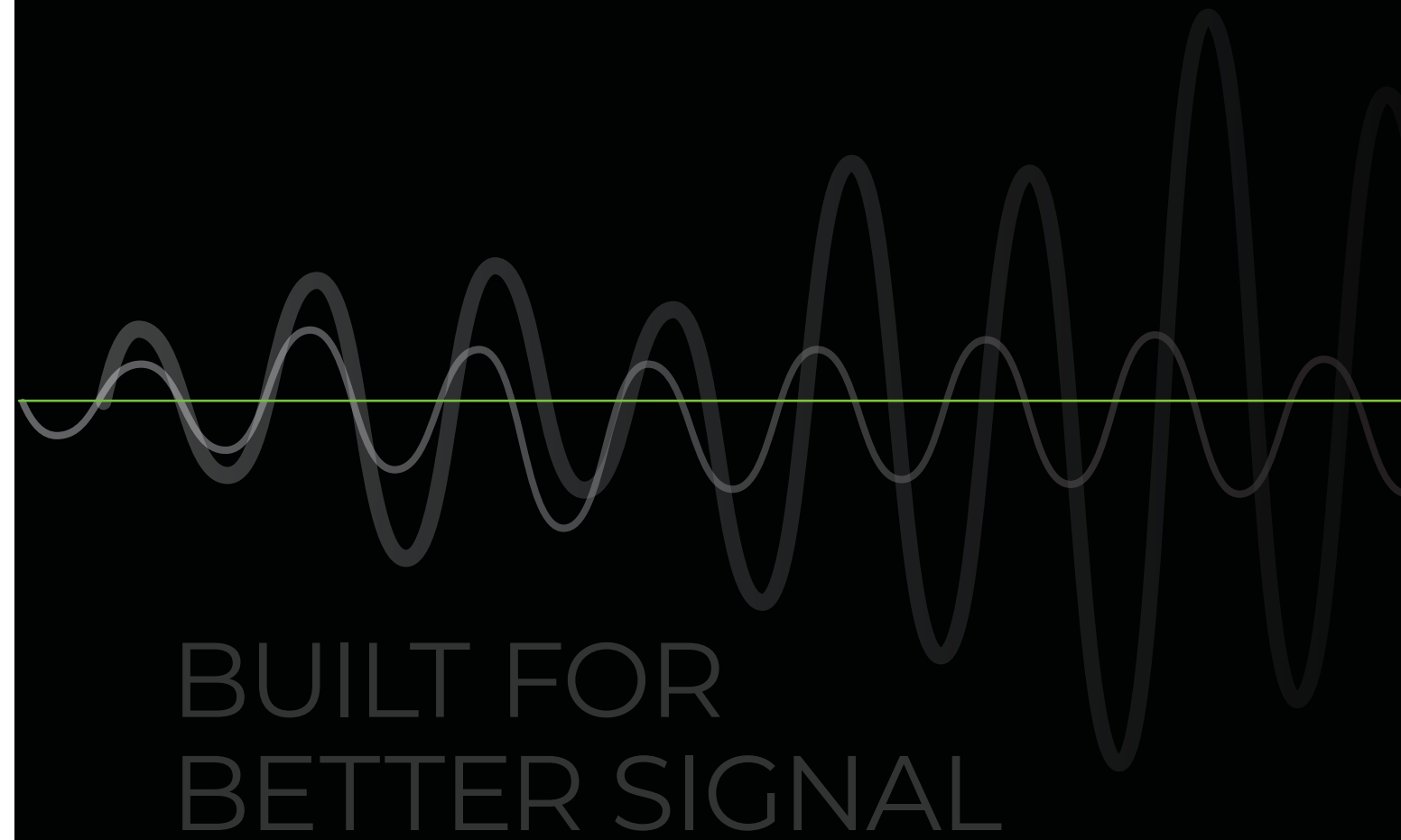


# PRODUCT CATALOGUE



BUILT FOR  
BETTER SIGNAL

# TABLE OF CONTENTS

<b>ABOUT US</b>	2	<b>ANTENNAS, CABLES &amp; ACCESSORIES</b>	22
How a Signal Booster Works	4	<b>VEHICLE ANTENNAS</b>	24
<b>BUILDING SOLUTIONS</b>	8	<b>OUTDOOR BUILDING ANTENNAS</b>	30
WilsonPro A8000	10	<b>OUTDOOR MARINE ANTENNAS</b>	34
WilsonPro A1000	12	<b>MINING ANTENNAS</b>	38
WilsonPro A500	14	<b>INDOOR BUILDING ANTENNAS</b>	40
<b>VEHICLE SOLUTIONS</b>	16	<b>ANTENNA MOUNTS</b>	44
weBoost AM100-Pro	18	<b>LIGHTENING SURGE PROTECTORS</b>	46
<b>ROUTERS</b>	20	<b>CABLES</b>	48
InRouter 302	21	<b>CONNECTORS &amp; ADAPTERS</b>	52
		<b>COUPLERS</b>	54
		<b>SPLITTERS</b>	56
		<b>CONTACT US</b>	58



# ABOUT US

We are South Africa's leading cell phone signal booster company. Say Goodbye to dropped calls, missed texts and slow data! Boost your cell phone signal today!

We fix Weak Cell Phone Signal! We are the sole distributors of WilsonPro Boosters in Southern Africa with products to boost 3G and 4G LTE signal in cars, homes and buildings. Our offices and warehouse are based in Johannesburg. Stop by and see us.

We offer the best technical support in the business with 30 Day Money Back Guarantees and 1 year warranty on all products. All of our support teams are based locally in Johannesburg. Our In-house installation team will work anywhere in South Africa.

**QUALITY** Quality is our priority. Our RF equipment provides the greatest gain at the lowest loss, preserving cellular signal for your systems and giving you the best value.

**TRUST** We foster relationships with our partners, suppliers and clients. All our products have a one-year warranty and a 30-day money back guarantee.

**RELIABLE** All our products are durable and built to last, ensuring improved signal consistently. We offer continued technical support and assistance where needed.

**LEADERSHIP** We are the leading Cell Phone Signal Booster experts in Africa. We employ and empower local South Africans through continued upskilling and training.

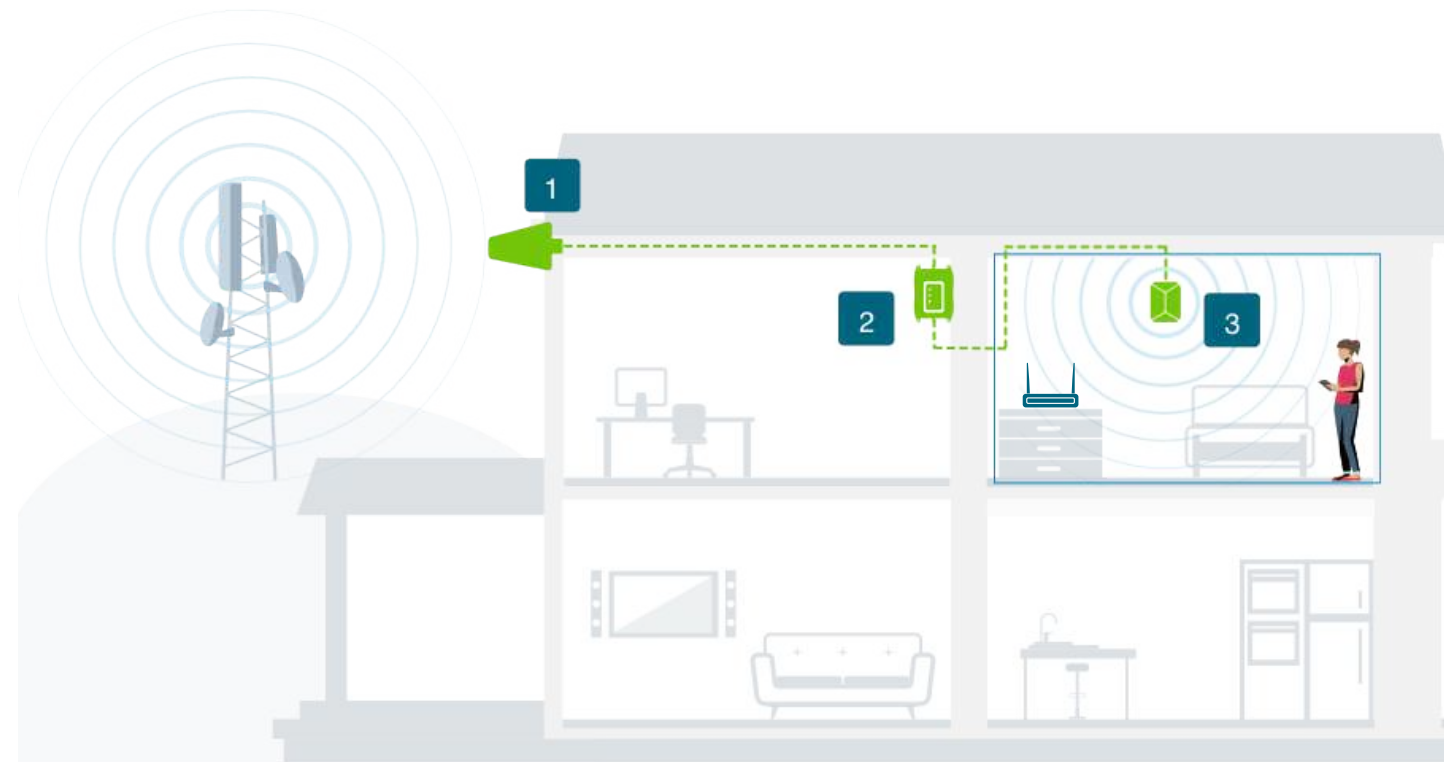




# HOW A SIGNAL BOOSTER WORKS

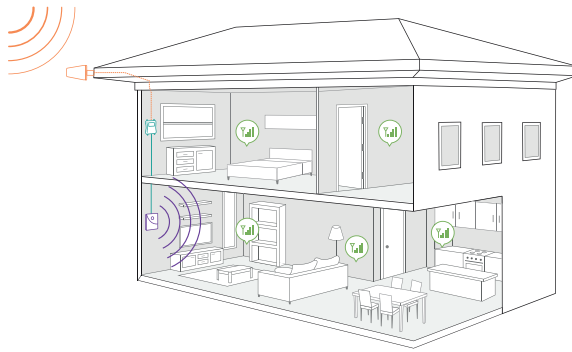
Dropped calls and slow data are generally caused by three things: distance from a cell tower, building materials in your home or office, or obstruction from tall objects such as trees, topography, and buildings.

Signal Booster systems are able to capture an exterior signal—even one that is far away—and amplify it in your car, home, or office. Signal booster devices work on every network, for any Mobile Network Operator, to give you up to 32 times your cell signal strength.

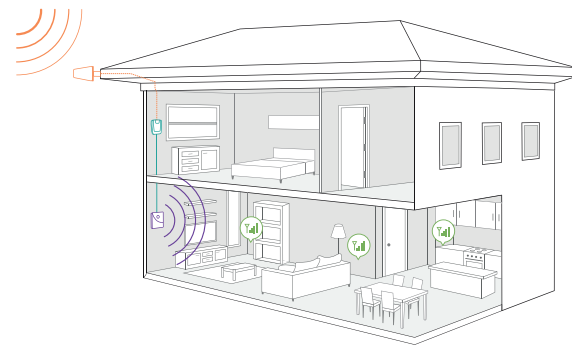




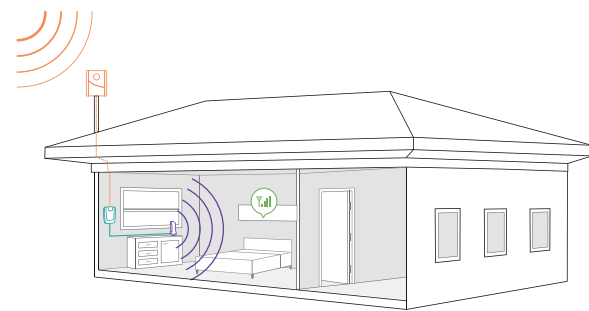
 UP TO 8,000 m<sup>2</sup> COVERAGE



 UP TO 500 m<sup>2</sup> COVERAGE



 UP TO 150 m<sup>2</sup> COVERAGE



# BUILDINGS

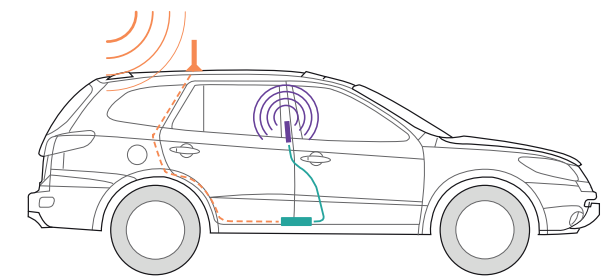
SINGLE ROOMS, HOMES & OFFICES

## HOW TO BOOST A CELL SIGNAL

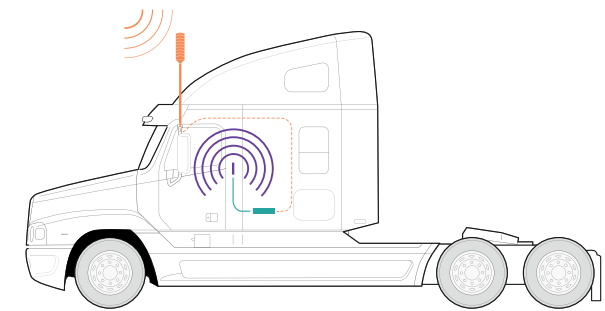
Signal boosters increase cell signal by collecting signals with a powerful antenna, delivering those signals to the booster, amplifying the cell signals so your devices receive them, and delivering your device's boosted signals back to the cell tower.

- 1 RECEIVES SIGNAL**  
The powerful antenna reaches out to access a voice and 4G/3G data signal, and delivers it to the booster.
- 2 BOOST SIGNAL**  
The booster receives the signal, amplifies it, and serves as a relay between your phone and the nearest cell tower.
- 3 BROADCASTS SIGNAL**  
Your devices get a stronger signal, and calls and data are fed through the booster back to the network.

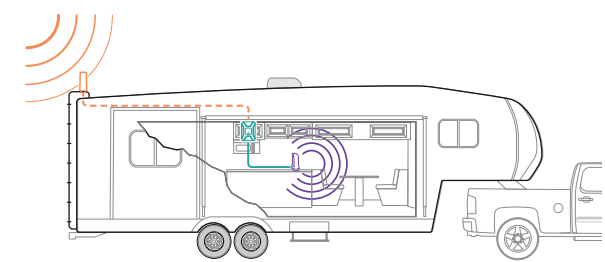
FAMILY VEHICLES



TRUCK AND COMMERCIAL



CAMPERS



# MOBILE

CARS, TRUCKS & CARAVANS

## HOW TO BOOST A CELL SIGNAL

Signal boosters increase cell signal by collecting signals with a powerful antenna, delivering those signals to the booster, amplifying the cell signals so your devices receive them, and delivering your device's boosted signals back to the cell tower.

- 1 RECEIVES SIGNAL**  
The powerful antenna reaches out to access a voice and 4G/3G data signal, and delivers it to the booster.
- 2 BOOST SIGNAL**  
The booster receives the signal, amplifies it, and serves as a relay between your phone and the nearest cell tower.
- 3 BROADCASTS SIGNAL**  
Your devices get a stronger signal, and calls and data are fed through the booster back to the network.



# BUILDING SOLUTIONS



# WilsonPro A8000

Enterprise Cell Phone Signal Booster

**LTE  
FASTEST  
NETWORK  
SPEEDS**

**UP TO  
+70dB  
GAIN**

**WILSONPRO  
CLOUD  
REMOTE  
MONITORING**

**UP TO  
8000 m<sup>2</sup>  
COVERAGE**



## ABOUT

The **WilsonPro A8000** is a commercial-grade, in-building cellular repeater that represents the latest in cell signal amplification technology—including a revolutionary industry-first, three outdoor antenna- port configuration. Depending on cell tower locations, using up to three outdoor antennas (each dedicated to a specific frequency band to collectively amplify signals from multiple towers) helps maximize coverage in commercial spaces up to 8000 m<sup>2</sup>.\*

All parts are included in the WilsonPro A8000 kit and friendly trained support staff on call to assist. All boosters come with a 1-year warranty.

\*Depending on outside signal conditions.

## KIT INCLUDES



WilsonPro A8000



AC Power Cable

## FEATURES

- Enhances Voice and Data (3G, 4G LTE) coverage up to 8000m<sup>2</sup> for all supported networks
- +70 dB gain and +21 dBm uplink
- Four independently controlled indoor antenna ports
- Real time performance and wired access to WilsonPro Cloud for remote monitoring
- Three outdoor antenna ports to target multiple network towers
- XDR technology to virtually eliminate shutdown or signal loss.
- 4.3-inch LCD touchscreen for an enhanced user-experience.

## MECHANICAL

MODEL NUMBER	510007	
FREQUENCIES	Band 1	2100 MHz
	Band 3	1800 MHz
	Band 7	2600 MHz
	Band 8	900 MHz
MAX GAIN	70 dB	
MAX UPLINK POWER	21 dBm	
MAX DOWNLINK POWER	18 dBm	
IMPEDANCE	50 Ohm	
POWER	110 - 240 V AC, 50 - 60 Hz, 30 W	
CONNECTORS	N-Female	
DIMENSIONS	48 x 30 x 6 · 43 x 30 x 9.5 cm	
WEIGHT	7.67 kgs · 4.47 kgs	

# WilsonPro A1000

3G/4G 2100 IMT (BAND 1) / 1800 DCS (BAND 3) / 900 E-GSM, GSM (BAND 8)

**LTE  
FASTEST  
NETWORK  
SPEEDS**

**UP TO  
+74dB  
GAIN**

**MULTI-USER  
WIRELESS  
BOOSTER**

**UP TO  
1000 m<sup>2</sup>  
COVERAGE**



## ABOUT

The **WilsonPro A1000** cell phone signal booster is a powerful 4G building booster. WilsonPro A1000 is professional grade, allowing users to get better voice and data with fewer dropped calls, improved voice quality, faster uploads and downloads. This A1000 Booster increases cell signals up to 32x and enhances 4G LTE and 3G signals for buildings up to 1000 m<sup>2</sup>. Quick and easy installation with easy instructions from our Quick Install Guide.

All parts are included in the WilsonPro A1000 kit and friendly trained support staff on call to assist. All boosters come with a 1-year warranty.

### KIT INCLUDES



### FEATURES

- Boosts 4G LTE & 3G signals for large homes and offices
- Coverage area up to 1000 m<sup>2</sup>
- For multiple devices and users
- Works on Vodacom, MTN, Cell C and selected Rain and Telkom bands
- Enhances voice, text, and high-speed 4G LTE internet

### MECHANICAL

MODEL NUMBER	520002	
FREQUENCIES	Band 1	2100 MHz
	Band 3	1800 MHz
	Band 8	900 MHz
MAX GAIN	74 dB (B1) / 74dB (B3) / 66dB (B8)	
IMPEDANCE	50 Ohm	
POWER	5.5V DC, 1.5A	
CONNECTORS	N-Female	
NOISE FIGURE	5dB nominal	

### COVERAGE AREA

IF YOUR OUTSIDE SIGNAL IS	YOUR BOOSTED SIGNAL MAY BE
●●●●● -89 AND LOWER About 5 bars	UP TO 1000 m <sup>2</sup>
●●●●○ -90 dB About 3 to 4 bars	UP TO 500 m <sup>2</sup>
●●○○○ -100 dB About 1 to 2 bars	UP TO 250 m <sup>2</sup>
○○○○○ No existing	A signal booster likely will not work



# WilsonPro A500

3G/4G 2100 IMT (BAND 1) / 1800 DCS (BAND 3) / 900 E-GSM, GSM (BAND 8)

**LTE  
FASTEST  
NETWORK  
SPEEDS**

**UP TO  
+70dB  
GAIN**

**MULTI-USER  
WIRELESS  
BOOSTER**

**UP TO  
500 m<sup>2</sup>  
COVERAGE**



## ABOUT

The **WilsonPro A500** cell phone signal booster is a powerful 4G building booster. WilsonPro A500 is professional grade, allowing users to get better voice and data with fewer dropped calls, improved voice quality, faster uploads and downloads. This A500 Booster increases cell signals up to 32x and enhances 4G LTE and 3G signals for buildings up to 500 m<sup>2</sup>. Quick and easy installation with easy instructions from our Quick Install Guide.

All parts are included in the WilsonPro A500 kit and friendly trained support staff on call to assist. All boosters come with a 1-year warranty.

### KIT INCLUDES



### FEATURES

- Boosts 4G LTE & 3G signals for large homes and offices
- Coverage area up to 500 m<sup>2</sup>
- For multiple devices and users
- Works on Vodacom, MTN, Cell C and selected Rain and Telkom bands
- Enhances voice, text, and high-speed 4G LTE internet

### MECHANICAL

MODEL NUMBER	520001	
FREQUENCIES	Band 1	2100 MHz
	Band 3	1800 MHz
	Band 8	900 MHz
MAX GAIN	74 dB (B1) / 74dB (B3) / 66dB (B8)	
IMPEDANCE	50 Ohm	
POWER	5V DC, 1.5A	
CONNECTORS	N-Female	
NOISE FIGURE	5dB nominal	

### COVERAGE AREA

IF YOUR OUTSIDE SIGNAL IS	YOUR BOOSTED SIGNAL MAY BE
●●●●● -89 AND LOWER About 5 bars	UP TO 500 m <sup>2</sup>
●●●●○ -90 dB About 3 to 4 bars	UP TO 250 m <sup>2</sup>
●●○○○ -100 dB About 1 to 2 bars	UP TO 120 m <sup>2</sup>
○○○○○ No existing	A signal booster likely will not work



# VEHICLE SOLUTIONS



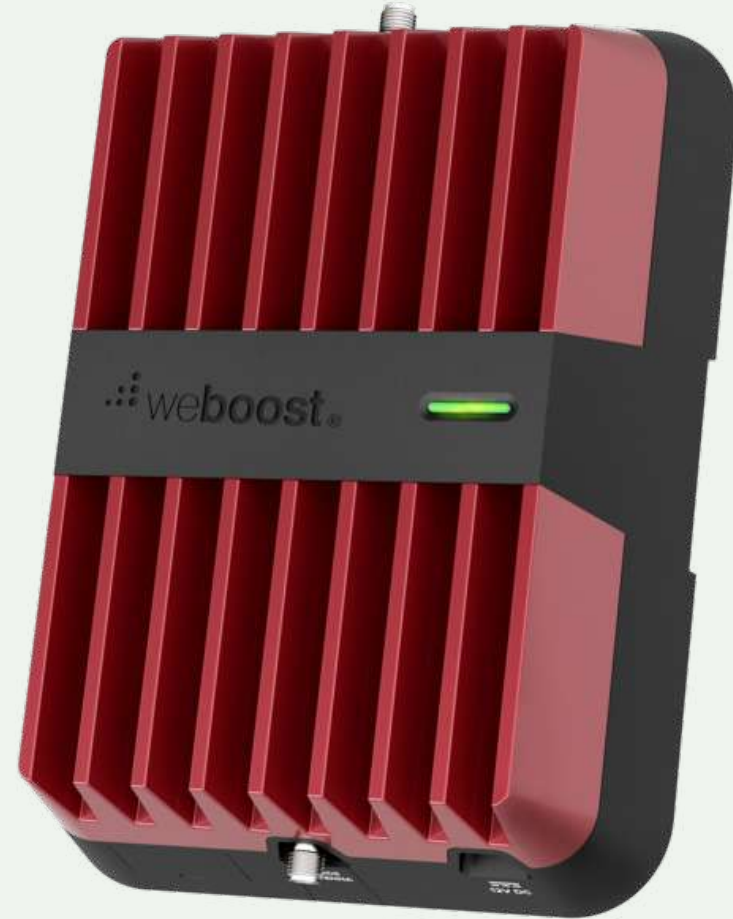
# weBoost AM100-Pro

**LTE**  
FASTEST  
NETWORK  
SPEEDS

UP TO  
**+50dB**  
GAIN

**3G** FAST  
NETWORK  
SPEEDS

MULTI-USER  
**WIRELESS**  
BOOSTER



## ABOUT

The **weBoost AM100-Pro** is weBoost's most popular 4G vehicle cell phone signal booster. This booster for vehicles extends cellular signal range to ensure you get better voice and data with fewer dropped calls, improved voice quality, faster uploads and downloads. weBoost's AM100 boosts cell signals up to 32x to enhance 4G LTE and 3G signals for everyone in the vehicle such as a car, truck, caravan or boat. Each booster comes with an inside antenna, magnetic outside antenna, and power supply.

Complete with a quick install guide for easy setup. weBoost provides a 1-year warranty to ensure the best cell phone signal booster experience possible.

## FEATURES

- Boosts 4G LTE & 3G for multiple people in a vehicle (car, truck, caravan or boat)
- For multiple devices and users
- Works on Vodacom, MTN, Cell C and selected Rain and Telkom bands
- Enhances voice, text, and high-speed 4G LTE internet

## MECHANICAL

MODEL NUMBER	AM100-Pro	
FREQUENCIES	Band 1	2100 MHz
	Band 3	1800 MHz
	Band 8	900 MHz
MAX GAIN	50 dB	
IMPEDANCE	50 Ohm	
POWER	12V / 2 A	
CONNECTORS	SMA Female	
BOOSTER DIMENSIONS	2cm x 15 x 11 cm	
WEIGHT (Amp Only)	0.53 kg	

## KIT INCLUDES



weBoost AM100-Pro



Mini-Magnet Mount Antenna



Low Profile Inside Antenna



Power Supply

# ROUTERS



## Routers

These routers integrate 4G LTE, Wi-Fi, and VPN technologies. Cost-effectiveness and higher reliability enables you to build a digital network with greater ease.



### InRouter302 Compact Industrial LTE Router

SIM Card	Dual drawer-type SIM card slots
CPU Platform	580MHz
Dimensions	90 x 90 x 25mm
Network Access	APN, VPDN, Private Network
RAM	RAM



### ER800 Cloud Based SD-WAN 5G Router

SIM Card	Dual SIM, Nano SIM
Throughput	600Mbps
Dimensions	210 x 140 x 35mm
Cellular	5G, downlink 2Gbps ,Sub6 , 4G
Storage	512MB

# ANTENNAS, CABLES & ACCESSORIES



# VEHICLE ANTENNAS

## Vehicle Antennas - External

These vehicle antennas receive and amplify the signal existing outside your vehicle and are designed for use with cellular signal boosters.



### 10cm Magnet Mount Antenna

Item No.	BT974068
Gain dBi	3.1
Impedance, ohm	50
Connector Type	SMA-Male
Cable Length	3.8m, RG-174 Cable



### 30cm Magnet Mount Antenna

Item No.	BT974075
Gain dBi	6.1
Impedance, ohm	50
Connector Type	SMA-Male
Cable Length	3.8m

## Vehicle Cellular Antennas



**The Bolton Technical Blade** | 5G Cellular Truck Antenna

Item No.	BT151885
Gain dBi	4.4
Impedance, ohm	50
Connector Type	Quick Disconnect Coax Cable
Cable Length	1.5 Ft



**PUCK-1** | SISO Transportation & Iot/M2M Antenna

Item No.	BT151526
Impedance, ohm	50
Connector Type	N-Female
Frequency Range	698 - 1990 / 1700-2700 MHz
Polarization	Vertical
Coax Type	RTK-031
Gain dBi	6

## Vehicle Antennas - External



**PUCK-2** | 2-IN-1 Transportation & Iot/M2M Antenna

Item No.	BT151533
Impedance, ohm	50
Connector Type	N-Female
Polarization	Vertical
Frequency Range	698 - 806 / 1700-2700/ 3200- 3800 MHz
Coax Type	RTK-031
Gain dBi	6



**PUCK-5** | 5-IN-1 Transportation & Iot/M2M Antenna

Item No.	BT151540
Impedance, ohm	50
Connector Type	N-Female
Polarization	Vertical
Frequency Range	698 - 806 / 1700-2700/ 3200- 3800 MHz
Coax Type	RTK-031
Gain dBi	21

## Vehicle Antennas - External



### MIMO-3-15 | 5-IN-1 Transportation & Automotive

Item No.	BT151571
Impedance, ohm	50
Connector Type	SMA-Male
Gain dBi	21
Frequency Range	410 - 470 / 698 - 960 / 1710 - 2700 / 3400 - 3800 MHz



### MIMO-3-17 | 7-IN-1 Transportation & Automotive

Item No.	BT151489
Impedance, ohm	50
Connector Type	N-Female
Frequency Range	410 - 470 / 698 - 2700 / 1710 - 3800 MHz
Water ingress protection	IP 65
Gain dBi	21



# OUTDOOR BUILDING ANTENNAS

## Building Antennas — External



### The Long Ranger

Item No.	BT974822
Impedance, ohm	50
Connector Type	N-Female
Frequency Range	600 / 6500 MHz
Max Gain	Up to +28dB



### The Arrow

Item No.	BT974921
Impedance, ohm	50
Connector Type	N-Female
Frequency Range	698-960 / 1710-2700 MHz
Max Gain	Up to 12dB
Cable Length	30cm
Coax Type	RG141

## Building Antennas — External



### Outdoor Yagi Antenna

Item No.	BT974884
Impedance, ohm	50
Connector Type	N-Female
Frequency Range	698-2700 MHz
Max Gain	Up to +9 dBi
Cable Length	30cm
Coax Type	RG141



### Outdoor Panel Antenna

Item No.	BT512365
Impedance, ohm	50
Connector Type	N-Female
Frequency Range	698 - 2700 MHz
Polarization	Vertical
Max Gain	Up to +8 dBi
Cable Length	30cm
Coax Type	RG141

## Building Antennas — External



### Outdoor Omni Directional Antenna

Item No.	BT512372
Impedance, ohm	50
Connector Type	N-Female
Frequency Range	698 / 2700 MHz
Max Gain	Up to +4dBi

## Building Antennas — Hotspots/Routers



### The Crossbow

Item No.	BT974976
Impedance, ohm	50
Connector Type	SMA-Male
Frequency Range	617-3800 MHz
Max Gain	Up to 11dBi
Coax Cable Length	5m

# OUTDOOR MARINE ANTENNAS



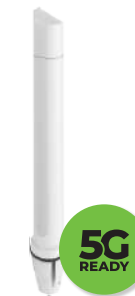
## Marine Antennas — External

Our Marine antennas are UV and saltwater protected for marine and coastal conditions.



### OMNI-400 | UV and saltwater protected

Item No.	BT151496
Impedance, ohm	50
Connector Type	N-Female
Frequency Range	698-960 / 1700-2700 MHz
Water ingress protection	IP 67
Max Gain	7.5 dBi



### OMNI-402 | UV and saltwater protected

Item No.	BT151502
Impedance, ohm	50
Connector Type	N-Female
Frequency Range	410 – 470 / 698 – 2700 / 3400 – 3800 MHz
Water ingress protection	IP 68
Max Gain	6.2 dBi



## Marine Antennas — External



### OMNI-600 | UV and saltwater protected

Item No.	BT151489
Impedance, ohm	50
Connector Type	N-Female
Frequency Range	410 – 470 /698 – 2700 /1710 – 3800 MHz
Water ingress protection	IP 65
Max Gain	6.2dBi



# MINING ANTENNAS

## Mining Antennas — Underground/Tunnel

Circular Polarised antenna provides enhanced signal propagation and connection stability within a tunnel.



**HELI-21** | Circular Polarised, Mine/Tunnel

Item No.	BT151557
Impedance, ohm	50
Connector Type	N-Male
Frequency Range	2400 - 2500 / 5000 - 6000 MHz
Water ingress protection	IP 65
Max Gain	13dBi



**HELI-22** | Circular Polarised, Mine/Tunnel

Item No.	BT151564
Impedance, ohm	50
Connector Type	N-Male
Frequency Range	2400 - 2500 / 5000 - 6000 MHz
Water ingress protection	IP 65
Max Gain	13dBi

# INDOOR BUILDING ANTENNAS



## Building Antennas — Internal



### Indoor Dome Antenna

Item No.	BT512396
Impedance, ohm	50
Connector Type	N-Female
Frequency Range	698 - 2700 MHz
Max Gain	Up to +5.1dB
Cable Length	34cm
Coax Type	RG141



### Low Profile Dome Antenna

Item No.	BT512358
Impedance, ohm	50
Connector Type	N-Female
Frequency Range	698 - 4000 MHz
Max Gain	Up to +7dB
Cable Length	30cm
Coax Type	RG141

# Building Antennas — Internal



## Indoor Wall Mount Panel Antenna

Item No.	BT512501
Impedance, ohm	50
Connector Type	N-Female
Frequency Range	698 - 1990 MHz
Polarization	Vertical
Cable Length	30cm
Coax Type	RG141



## Desktop Antenna

Item No.	Omni-0280-02
Impedance, ohm	50
Connector Type	SMA-Male
Frequency Range	698-2700 MHz
Polarization	Vertical
Line Length	60cm



# ANTENNA MOUNTS

## Antenna Mounts & Accessories

---



**Various Pole Mount** | Accessory Kit for Outside Antenna

Item No. BT512631





# LIGHTNING SURGE PROTECTORS

## Lightning Surge Protectors

Lightening Surge protector for 50 Ohm devices. Make sure your cable fits the protector. Also, don't forget to ground them!



**50 Ohm** | Protect your 50 Ohm accessories and devices

Item No.	BT512068
Frequency	Up to 2500 MHz
Attenuation	Less than 0.2 dB
Impedance	50 Ohm
Connectors	N-Female
N-Connectors	Replaceable Fuse Cartridge



# CABLES

## LMR® 400 Equivalent Cables



**BT512112**  
60cm Bolton400 Low Loss Cable  
N-Male To N-Male  
PE, Black Jacket  
(Equivalent to LMR®400)



**BT512532**  
10m Bolton400 Low Loss Cable  
N-Male to N-Male  
PE, Black Jacket  
(Equivalent to LMR®400)



**BT512549**  
15m Bolton400 Low Loss Cable  
N-Male to N-Male  
PE, Black Jacket  
(Equivalent to LMR®400)



**BT974723**  
500m Bolton400 Ultra Low-Loss  
Cable Spool, PE, No Connectors  
Black Jacket  
(Equivalent to LMR®400)

*LMR® 240, LMR® 400, and LMR® 600 are trademarks of Tessco Technologies, Inc. and our use of them in this context for Bolton 240, 400, and 600 is for equivalency comparison purposes only.*



## LMR® 240 Equivalent Cables

---



**BT974754**  
500m Bolton240 Low-Loss Cable  
Spool, PE, No Connectors  
Black Jacket  
(Equivalent to LMR®240)

## LMR® 600 Equivalent Cables

---



**BT974747**  
500m Bolton600 Ultra Low-Loss  
Cable Spool, PE, No Connectors  
Black Jacket  
(Equivalent to LMR®600)



# CONNECTORS & ADAPTERS

## Connectors & Adapters



**BT512198**  
N-Male to N-Male  
Barrel Connector



**BT596251**  
N-Female to N-Female  
Barrel Connector



**BT974839**  
N-Male to SMA Female  
Barrel Connector



**BT512051**  
LMR® 400 N-Male Crimp  
Connector



**BT512204**  
N-Male Bolton600 Crimp  
Connector



**BT512518**  
N-male Crimp for LMR240  
Connector



**BT512525**  
SMA Male Crimp for LMR 240  
Connector



# COUPLERS

## Couplers



**6 dB Coupler** | 698-2700 MHz | Low-PIM | N-Female

Item No.	BT512402
Coupled Loss	-0.97 decibels (dB)
Power	50 W avg.
Directivity	19 dB minimum
Ingress Protection	IP65
Connector	N-Female
Impedance	50 Ohm



**10 dB Coupler** | 698-2700 MHz | Low-PIM | N-Female

Item No.	BT512419
Frequency	698-2700 MHz
Insertion Loss	-0.96 dB
Connectors	N-female
Maximum Power	200 W
Impedance	50 Ohm



# SPLITTERS

## Splitters (50 Ohm)



### Low-PIM 2-Way Splitter | 698-2700Mhz 50 Ohm (Wilkinson Style)

- Item No. BT512440
- Low Insertion Loss and VSWR
- High Isolations
- Widely used in IBS & DAS
- Allows you to add two indoor antennas to a cellular system



### Low-PIM 3-Way Splitter | 698-2700Mhz 50 Ohm (Wilkinson Style)

- Item No. BT512433
- Low Insertion Loss and VSWR
- High Isolations
- Widely used in IBS & DAS
- Allows you to add three indoor antennas to a cellular system



### Low-PIM 4-Way Splitter | 698-2700Mhz 50 Ohm (Wilkinson Style)

- Item No. BT512426
- Low Insertion Loss and VSWR
- High Isolations
- Widely used in IBS & DAS
- Allows you to add four indoor antennas to a cellular system

## Need more info?

If you have a question about our products, need help with equipment, or just want to talk to an expert, contact us!

---

### Sole Agent of Wilson Electronics in Africa

#### Bolton Technical South Africa

[www.boltontechnical.co.za](http://www.boltontechnical.co.za)

(+27) 11 749 3085

[sales@boltontechnical.co.za](mailto:sales@boltontechnical.co.za)



# Warranty Overview

---

## 1 Year Warranty

WilsonPro and weBoost signal boosters are warranted for one (1) year against defects in workmanship and/or materials. Warranty cases may be resolved by returning the product directly to the reseller with a dated proof of purchase.

Signal boosters may also be returned directly to the manufacturer at the consumer's expense, with a dated proof of purchase and a Returned Material Authorization (RMA) number supplied by weBoost. weBoost shall, at its option, either repair or replace the product.

This warranty does not apply to any signal booster determined by weBoost to have been subjected to misuse, abuse, neglect, or mishandling that alters or damages physical or electronic properties.

Replacement products may include refurbished weBoost products that have been recertified to conform with product specifications.

RMA numbers may be obtained by contacting Customer Support.

### To start your return:

1. Contact Customer Service at +27-11-749-3085 for troubleshooting and possible return/exchange of product.
2. After booster information (serial number, model number, date of purchase) is provided, an RMA number is given to the customer.
3. Once shipping information is provided to a Customer Service agent, the agent explains to customer that they can ship the returning product(s) to the following address:

Main Address:  
5 Rydal Lane  
JT Business Park  
Unit 4, Longlake, 1609

4. Once product(s) arrives at our facility, a replacement will be shipped.





Product Specifications may change without prior notice.