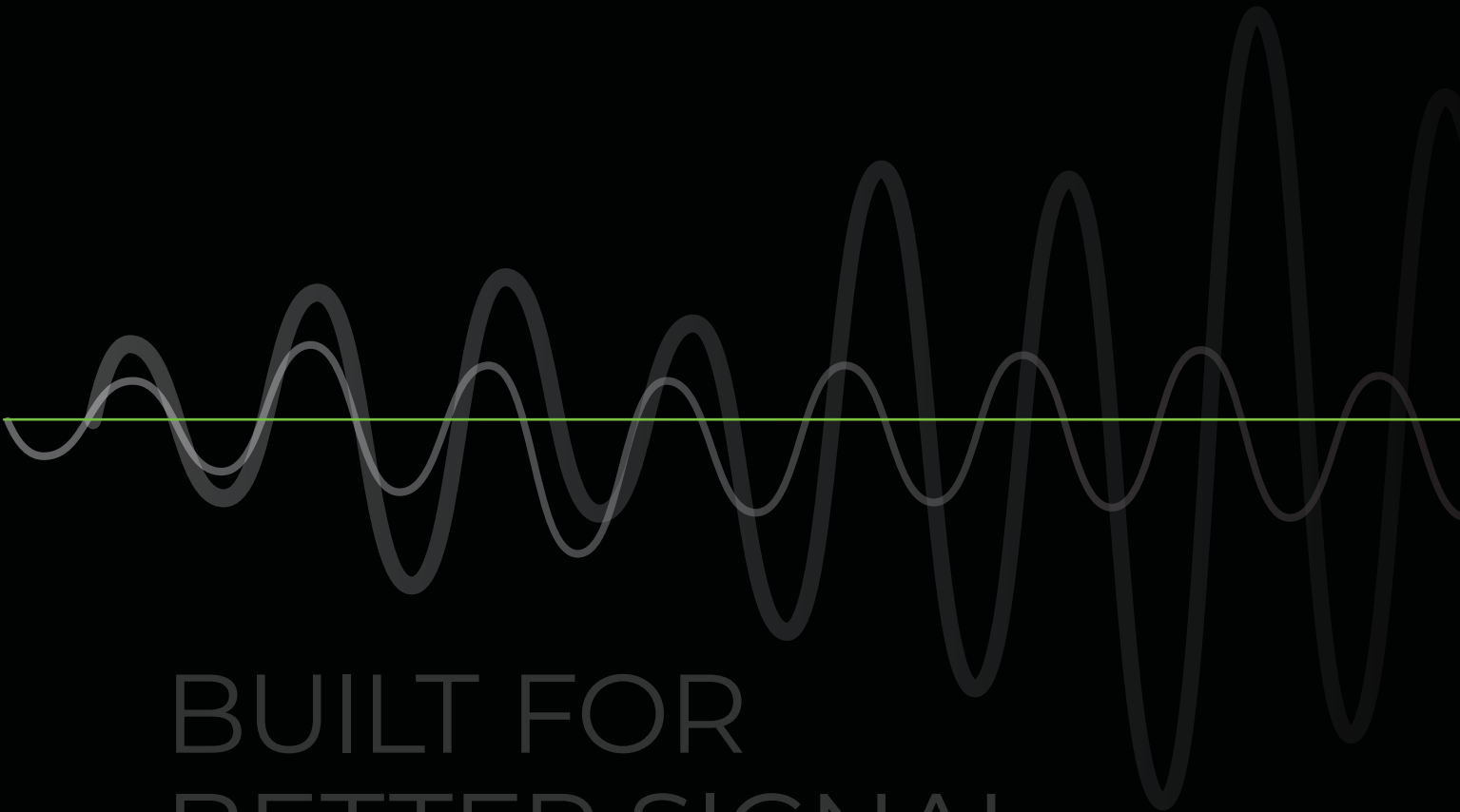




PRODUCT CATALOGUE



BUILT FOR
BETTER SIGNAL

TABLE OF CONTENTS

ABOUT US	2	ANTENNAS, CABLES & ACCESSORIES	22
<u>How a Signal Booster Works</u>	4	VEHICLE ANTENNAS	24
BUILDING SOLUTIONS	8	OUTDOOR BUILDING ANTENNAS	32
<u>WilsonPro A8000</u>	10	INDOOR BUILDING ANTENNAS	46
<u>WilsonPro A1000</u>	12	LIGHTNING SURGE PROTECTORS	50
<u>WilsonPro A500</u>	14	CABLES	52
VEHICLE SOLUTIONS	16	CONNECTORS & ADAPTERS	56
<u>weBoost AM100-Pro</u>	18	COUPLERS	58
ROUTERS	20	SPLITTERS	60
<u>InRouter 302</u>	21	CONTACT US	62



ABOUT US

We are South Africa's leading cell phone signal booster company. Say Goodbye to dropped calls, missed texts and slow data! Boost your cell phone signal today!

We fix Weak Cell Phone Signal! We are the sole distributors of WilsonPro Boosters in Southern Africa with products to boost 3G and 4G LTE signal in cars, homes and buildings. Our offices and warehouse are based in Johannesburg. Stop by and see us.

We offer the best technical support in the business with 30 Day Money Back Guarantees and 1 year warranty on all products. All of our support teams are based locally in Johannesburg. Our In-house installation team will work anywhere in South Africa.

QUALITY Quality is our priority. Our RF equipment provides the greatest gain at the lowest loss, preserving cellular signal for your systems and giving you the best value.

TRUST We foster relationships with our partners, suppliers and clients. All our products have a one-year warranty and a 30-day money back guarantee.

RELIABLE All our products are durable and built to last, ensuring improved signal consistently. We offer continued technical support and assistance where needed.

LEADERSHIP We are the leading Cell Phone Signal Booster experts in Africa. We employ and empower local South Africans through continued upskilling and training.

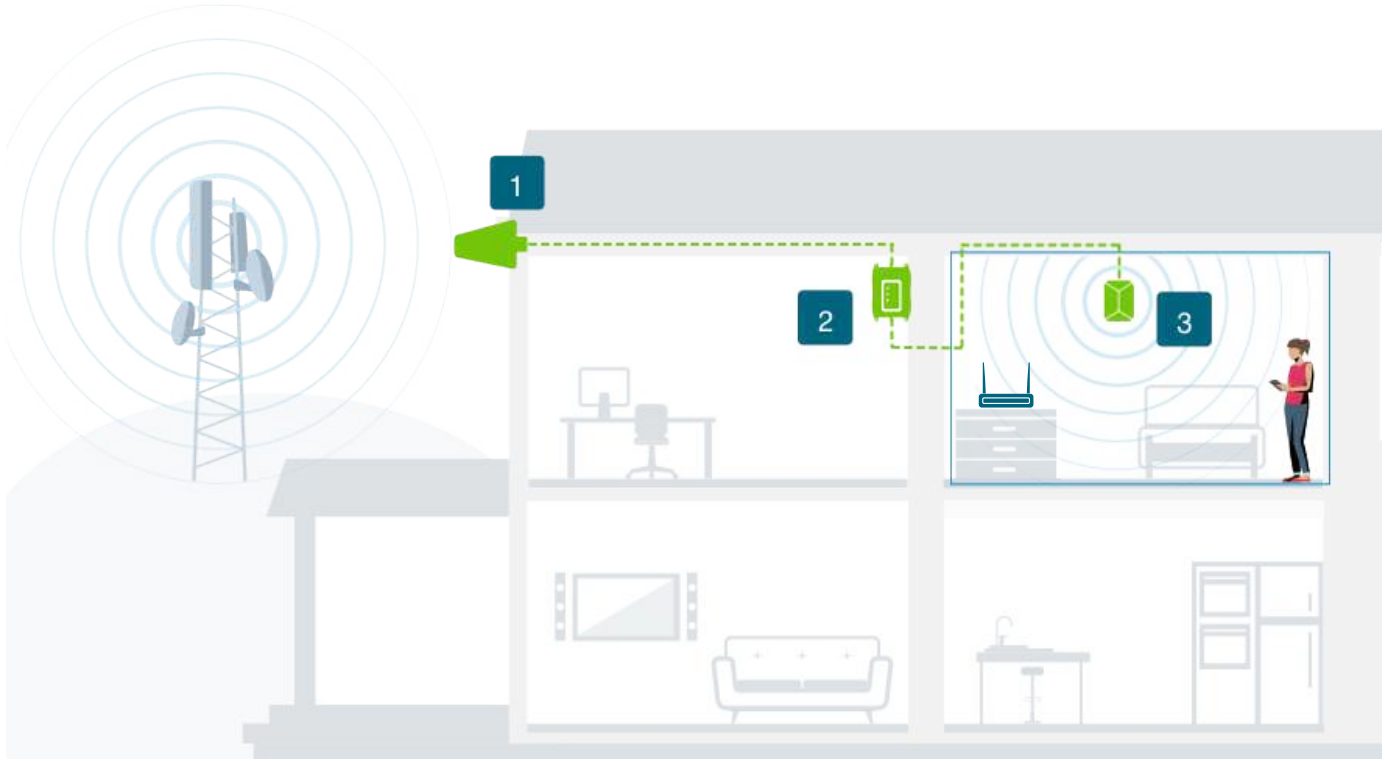




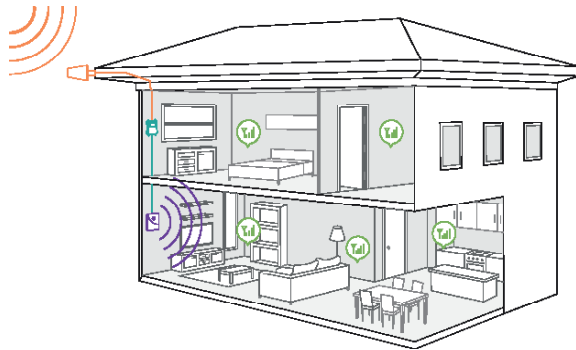
HOW A SIGNAL BOOSTER WORKS

Dropped calls and slow data are generally caused by three things: distance from a cell tower, building materials in your home or office, or obstruction from tall objects such as trees, topography, and buildings.

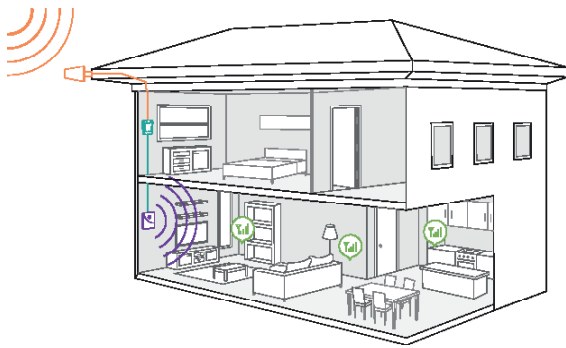
Signal Booster systems are able to capture an exterior signal—even one that is far away—and amplify it in your car, home, or office. Signal booster devices work on every network, for any Mobile Network Operator, to give you up to 32 times your cell signal strength.



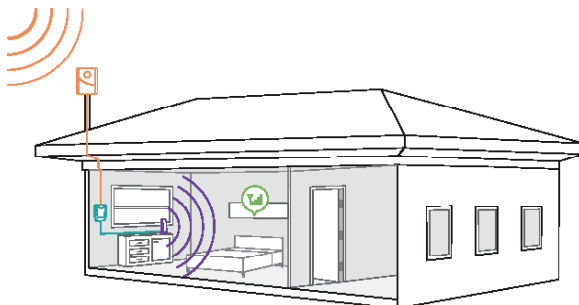
 UP TO 8,000 m² COVERAGE



 UP TO 500 m² COVERAGE



 UP TO 150 m² COVERAGE



BUILDINGS

SINGLE ROOMS, HOMES & OFFICES

HOW TO BOOST A CELL SIGNAL

Signal boosters increase cell signal by collecting signals with a powerful antenna, delivering those signals to the booster, amplifying the cell signals so your devices receive them, and delivering your device's boosted signals back to the cell tower.

1 RECEIVES SIGNAL

The powerful antenna reaches out to access a voice and 4G/3G data signal, and delivers it to the booster.

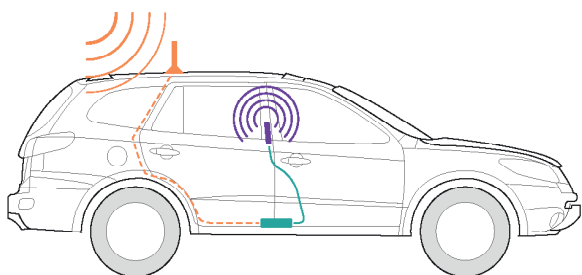
2 BOOST SIGNAL

The booster receives the signal, amplifies it, and serves as a relay between your phone and the nearest cell tower.

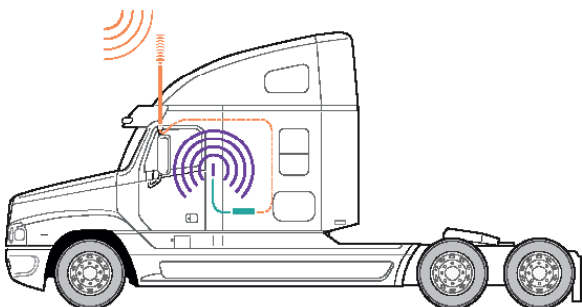
3 BROADCASTS SIGNAL

Your devices get a stronger signal, and calls and data are fed through the booster back to the network.

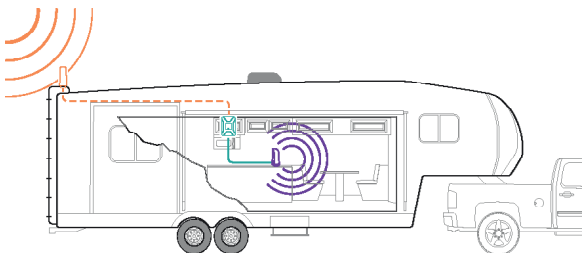
FAMILY VEHICLES



TRUCK AND COMMERCIAL



CAMPERS



MOBILE

CARS, TRUCKS & CARAVANS

HOW TO BOOST A CELL SIGNAL

Signal boosters increase cell signal by collecting signals with a powerful antenna, delivering those signals to the booster, amplifying the cell signals so your devices receive them, and delivering your device's boosted signals back to the cell tower.

- 1 RECEIVES SIGNAL**
The powerful antenna reaches out to access a voice and 4G/3G data signal, and delivers it to the booster.
- 2 BOOST SIGNAL**
The booster receives the signal, amplifies it, and serves as a relay between your phone and the nearest cell tower.
- 3 BROADCASTS SIGNAL**
Your devices get a stronger signal, and calls and data are fed through the booster back to the network.



BUILDING SOLUTIONS



BOLTON TECHNICAL SOUTH AFRICA

| PRODUCT CATALOGUE



WilsonPro A8000

Enterprise Cell Phone Signal Booster

LTE
FASTEST
NETWORK
SPEEDS

UP TO
+70dB
GAIN

WILSONPRO
CLOUD
REMOTE
MONITORING

UP TO
8000 m²
COVERAGE



ABOUT

The **WilsonPro A8000** is a commercial-grade, in-building cellular repeater that represents the latest in cell signal amplification technology—including a revolutionary industry-first, three outdoor antenna- port configuration. Depending on cell tower locations, using up to three outdoor antennas (each dedicated to a specific frequency band to collectively amplify signals from multiple towers) helps maximize coverage in commercial spaces up to 8000 m².*

All parts are included in the WilsonPro A8000 kit and friendly trained support staff on call to assist. All boosters come with a 1-year warranty.

*Depending on outside signal conditions.

KIT INCLUDES



WilsonPro
A8000

FEATURES

- Enhances Voice and Data (3G, 4G LTE) coverage up to 8000m² for all supported networks
- +70 dB gain and +21 dBm uplink
- Four independently controlled indoor antenna ports
- Real time performance and wired access to WilsonPro Cloud for remote monitoring
- Three outdoor antenna ports to target multiple network towers
- XDR technology to virtually eliminate shutdown or signal loss.
- 4.3-inch LCD touchscreen for an enhanced user-experience.

MECHANICAL

MODEL NUMBER	510007	
FREQUENCIES	Band 1	2100 MHz
	Band 3	1800 MHz
	Band 7	2600 MHz
	Band 8	900 MHz
MAX GAIN	70 dB	
MAX UPLINK POWER	21 dBm	
MAX DOWNLINK POWER	18 dBm	
IMPEDANCE	50 Ohm	
POWER	110 - 240 V AC, 50 - 60 Hz, 30 W	
CONNECTORS	N-Female	
DIMENSIONS	48 x 30 x 6 · 43 x 30 x 9.5 cm	
WEIGHT	7.67 kgs · 4,47 kgs	

WilsonPro A1000

3G/4G 2100 IMT (BAND 1) / 1800 DCS (BAND 3) / 900 E-GSM, GSM (BAND 8)

LTE
FASTEST
NETWORK
SPEEDS

UP TO
+74dB
GAIN

MULTI-USER
WIRELESS
BOOSTER

UP TO
1000 m²
COVERAGE



ABOUT

The **WilsonPro A1000** cell phone signal booster is a powerful 4G building booster. WilsonPro A1000 is professional grade, allowing users to get better voice and data with fewer dropped calls, improved voice quality, faster uploads and downloads. This A1000 Booster increases cell signals up to 32x and enhances 4G LTE and 3G signals for buildings up to 1000 m². Quick and easy installation with easy instructions from our Quick Install Guide.

All parts are included in the WilsonPro A1000 kit and friendly trained support staff on call to assist. All boosters come with a 1-year warranty.

KIT INCLUDES



WilsonPro A1000



Outside Directional Antenna



Inside Panel Antenna



Power Supply



15m; 10m; and 1m jumper cable. Low Loss BOLTON Cable



Lightning Surge Protector

FEATURES

- Boosts 4G LTE & 3G signals for large homes and offices
- Coverage area up to 1000 m²
- For multiple devices and users
- Works on Vodacom, MTN, Cell C and selected Rain and Telkom bands
- Enhances voice, text, and high-speed 4G LTE internet

MECHANICAL

MODEL NUMBER	520002	
FREQUENCIES	Band 1	2100 MHz
	Band 3	1800 MHz
	Band 8	900 MHz
MAX GAIN	74 dB (B1) / 74dB (B3) / 66dB (B8)	
IMPEDANCE	50 Ohm	
POWER	5.5V DC, 1.5A	
CONNECTORS	N-Female	
NOISE FIGURE	5dB nominal	

COVERAGE AREA

IF YOUR OUTSIDE SIGNAL IS	YOUR BOOSTED SIGNAL MAY BE
●●●●● -89 AND LOWER About 5 bars	UP TO 1000 m ²
●●●●○ -90 dB About 3 to 4 bars	UP TO 500 m ²
●●○○○ -100 dB About 1 to 2 bars	UP TO 250 m ²
○○○○○ No existing	A signal booster likely will not work

WilsonPro A500

3G/4G 2100 IMT (BAND 1) / 1800 DCS (BAND 3) / 900 E-GSM, GSM (BAND 8)

LTE
FASTEST
NETWORK
SPEEDS

UP TO
+70dB
GAIN

MULTI-USER
WIRELESS
BOOSTER

UP TO
500 m²
COVERAGE



ABOUT

The **WilsonPro A500** cell phone signal booster is a powerful 4G building booster. WilsonPro A500 is professional grade, allowing users to get better voice and data with fewer dropped calls, improved voice quality, faster uploads and downloads. This A500 Booster increases cell signals up to 32x and enhances 4G LTE and 3G signals for buildings up to 500 m². Quick and easy installation with easy instructions from our Quick Install Guide.

All parts are included in the WilsonPro A500 kit and friendly trained support staff on call to assist. All boosters come with a 1-year warranty.

FEATURES

- Boosts 4G LTE & 3G signals for large homes and offices
- Coverage area up to 500 m²
- For multiple devices and users
- Works on Vodacom, MTN, Cell C and selected Rain and Telkom bands
- Enhances voice, text, and high-speed 4G LTE internet

MECHANICAL

MODEL NUMBER	520001	
FREQUENCIES	Band 1	2100 MHz
	Band 3	1800 MHz
	Band 8	900 MHz
MAX GAIN	74 dB (B1) / 74dB (B3) / 66dB (B8)	
IMPEDANCE	50 Ohm	
POWER	5V DC, 1.5A	
CONNECTORS	N-Female	
NOISE FIGURE	5dB nominal	

KIT INCLUDES



WilsonPro A500

Outside Directional Antenna

Inside Panel Antenna

Power Supply

15m; 10m; and 1m jumper cable. Low Loss BOLTON Cable

Lightning Surge Protector

COVERAGE AREA

IF YOUR OUTSIDE SIGNAL IS	YOUR BOOSTED SIGNAL MAY BE
●●●●● -89 AND LOWER About 5 bars	UP TO 500 m ²
●●●●○ -90 dB About 3 to 4 bars	UP TO 250 m ²
●●○○○ -100 dB About 1 to 2 bars	UP TO 120 m ²
○○○○○ No existing	A signal booster likely will not work



VEHICLE SOLUTIONS



weBoost AM100-Pro

LTE
FASTEST
NETWORK
SPEEDS

UP TO
+50dB
GAIN

3G FAST
NETWORK
SPEEDS

MULTI-USER
WIRELESS
BOOSTER



ABOUT

The **weBoost AM100-Pro** is weBoost's most popular 4G vehicle cell phone signal booster. This booster for vehicles extends cellular signal range to ensure you get better voice and data with fewer dropped calls, improved voice quality, faster uploads and downloads. weBoost's AM100 boosts cell signals up to 32x to enhance 4G LTE and 3G signals for everyone in the vehicle such as a car, truck, caravan or boat. Each booster comes with an inside antenna, magnetic outside antenna, and power supply.

Complete with a quick install guide for easy setup. weBoost provides a 1-year warranty to ensure the best cell phone signal booster experience possible.

FEATURES

- Boosts 4G LTE & 3G for multiple people in a vehicle (car, truck, caravan or boat)
- For multiple devices and users
- Works on Vodacom, MTN, Cell C and selected Rain and Telkom bands
- Enhances voice, text, and high-speed 4G LTE internet

MECHANICAL

MODEL NUMBER	AM100-Pro	
FREQUENCIES	Band 1	2100 MHz
	Band 3	1800 MHz
	Band 8	900 MHz
MAX GAIN	50 dB	
IMPEDANCE	50 Ohm	
POWER	12V / 2 A	
CONNECTORS	SMA Female	
BOOSTER DIMENSIONS	2cm x 15 x 11 cm	
WEIGHT (Amp Only)	0.53 kg	

KIT INCLUDES



weBoost
AM100-Pro



Mini-Magnet
Mount Antenna



Low Profile
Inside Antenna



Power Supply



ROUTERS



BOLTON TECHNICAL SOUTH AFRICA

| PRODUCT CATALOGUE

Routers

These routers integrate 4G LTE, Wi-Fi, and VPN technologies. Cost-effectiveness and higher reliability enables you to build a digital network with greater ease.



InRouter302 Compact Industrial LTE Router

SIM Card	Dual drawer-type SIM card slots
CPU Platform	580MHz
Dimensions	90 x 90 x 25mm
Network Access	APN, VPDN, Private Network
RAM	RAM



ER800 Cloud Based SD-WAN 5G Router

SIM Card	Dual SIM, Nano SIM
Throughput	600Mbps
Dimensions	210 x 140 x 35mm
Cellular	5G, downlink 2Gbps, Sub6, 4G
Storage	512MB



ANTENNAS, CABLES & ACCESSORIES



VEHICLE ANTENNAS



The Bolton Technical Blade

5G Cellular Vehicle Antenna

EXCLUSIVE
**WHISTLE-FREE
DESIGN**

WIDEBAND &
**RELIABLE LTE
ANYWHERE**

QUICK
**DISCONNECT
COAX CABLE**

VERSATILE
**MOUNTING
OPTIONS**



Learn More at
BoltonTechnical.co.za



ELECTRICAL STUFF

Product Specifications may change without prior notice.

Item No.	BT151885				
Frequency Range	MHz	600	698-806	806-960	1710-1880
Typical Gain	dBi	-6.4	2.7	2.1	4.4
Frequency Range	MHz	1850-1990	1910-2170	2300-2700	3600-3750
Typical Gain	dBi	2.7	2.4	3.9	2.3
Max Gain	dBi	4.4			
Input Impedance	Ohm	50			
Polarization Type	Vertical				
Max Power	W	15			

MECHANICAL STUFF

Connector Type	SMA Male/FME Female	
Antenna Length	mm, in	597 mm, 23.5" in
Pigtail Coax Cable Length	mm, ft	38 mm, 1.5" to termination
Quick-Connect Coax Cable Type	RG-58 (88240)	
4M/13ft Coax Cable Extension	LMR [®] 200 Type	SMA Male/SMA Male
Radome Material:	Tinned Copper/High Rigidity ABS	
Radome Color	UV Resistant Black	
Warranty Term	1 Year Manufacturers Warranty	
Assembled in the USA	Yes	



Vehicle Antennas - External

These vehicle antennas receive and amplify the signal existing outside your vehicle and are designed for use with cellular signal boosters.



Drive Magnetic Outside Antenna

Item No.	BT311216
Gain dBi	1.1
Impedance, ohm	50
Connector Type	SMA-Male
Cable Length	3m, RG-174 Cable



30cm Magnet Mount Antenna

Item No.	BT974075
Gain dBi	6.1
Impedance, ohm	50
Connector Type	SMA-Male
Cable Length	3.8m

Bolton Technical Vehicle Antenna Accessories

Bolton vehicle antennas feature a 3/8 x 24 threaded base for the easiest and most versatile mounting options.



Quick Disconnect | For 3/8" by 24" threaded antennas

Item No. BT151939

Simple twist and turn motion for easy removal of antenna

For 3/8 by 24 threaded antennas

Chrome Plated Brass with Stainless Steel Spring and Pin



90 Degree Layover | For 3/8" by 24" threaded antennas

Item No. BT151946

For 3/8 by 24 threaded antennas

Chrome Plated Brass with Stainless Steel Spring and Pin

Spring Loaded For easy 90 Degree Fold-Over Antenna Adapter



Medium-Duty Spring | For 3/8" by 24" threaded antennas

Item No. BT151953

4" Medium Duty CB Spring for CB, Cellular, and Amateur Radio Antennas

Medium Duty Spring suitable for Stainless Steel & Fiberglass antennas

Made from top grade electro-polished stainless steel



Dome Stud Mount

Item No. BT151984

3/8 x 24 Threaded Base

Securely fastens antenna to vehicle

Simple beehive look, heavy-duty with 1/2" hole



Trunk Lip Mount with Dome Stud Mount

Item No. BT151991

For attaching to vehicle truck

Fits 3/8" by 24" threaded antennas

Chrome Plated Brass with Stainless Steel Spring and Pin



Mirror Antenna Bracket | (only; Dome mount required)

Item No. BT151441

For Mirror Brackets Measuring .625" to 1" in Diameter

Dual Grooves Provide More Stabilization

Gripper Tabs Ensure Extra Secure Mounting



Rack Mount Antenna Bracket | (only; Dome mount required)

Item No. BT974372

Firmly attaches to bars from up to 3/4" up to 2.5" in diameter

Stainless Steel

For attaching to headache rack, tractor, or toolbox



L-Shaped Antenna Bracket | (only; Dome mount required)

Item No. BT-L-Shape-Blade-BRK

Firmly attaches to flat surface using four screws on RV roof

Stainless Steel

No additional mounting holes needed



Bolton200 Black SMA-Male SMA-Male 20ft/6m Coaxial Cable

Item No. BT151977

Ultra-low loss black coaxial cable

Works with any RF system, including Cellular, GPS, Mobile Antennas

20ft, 6m, 50 Ohm impedance with SMA-Male/SMA-Male termination



Bolton200 Black SMA-Male SMA-Male 14ft / 4m Coaxial Cable

Item No. BT151960

Ultra-low loss black coaxial cable

Works with any RF system, including Cellular, GPS, Mobile Antennas

14ft, 4m, 50 Ohm impedance with SMA-Male/SMA-Male termination



OUTDOOR ANTENNAS



The Long Ranger

Ultra High Gain Parabolic Cellular Antenna

UP TO
+28dB
GAIN

10°
DIRECTIONAL
BEAM

REACHES
OVER **16**
KMS

PARABOLIC
DESIGN



Learn More at
BoltonTechnical.co.za



ELECTRICAL STUFF

Item No.	BT974822				
Frequency Range	MHz	600-960	1700-2200	3000-6500	
Gain	dBi	8-15	20-28	10-26	
Polarization	Vertical or Horizontal				
Beam width	Horizontal	deg	23	10	7
	Vertical		35	13	9
VSWR		≤2.5	≤2.0	≤2.5	
Front-To-Back Ratio	dB	>11	20	>10	
Input Power, maximum	watt	100			
Impedance	ohm	50			

MECHANICAL STUFF

Connector Type	N-Female	
Size	cm, in	60 x 99 x 40, 24 x 39 x 16
Weight, without Mounting Kit	kg, lb	2.4, 5.3
Mounting hardware	mm, in	ø35 ~ ø50, 1.4 ~ 2
Reflector Finish		Electrostatic Powder Coat
Radome Material		ABS Anti UV
Operational Temperature	°C, °F	-55~60, -67~140
Operational Humidity	%	< 95

RADIATION PATTERNS

HORIZONTAL



VERTICAL



The Beacon 5G

Indoor/Outdoor Suction Antenna

UP TO
+7.5dB
GAIN

90°
AIMING
CONE

SUCTION CUPS
FOR EASY
INSTALL



Learn More at
BoltonTechnical.co.za



ELECTRICAL STUFF

Product Specifications may change without prior notice.

Item No.	BT684129: Pigtail BT684205: 6-ft Cable BT684212: 20-ft Cable					
Frequency Range	MHz	698-960	806-960	1710-2700	3300-4000	
Gain	dBi	4.5±1	6±0.5	7.5±1	6±1	
Polarization	Vertical					
Beam width	Horizontal	deg	80	80	65	40
	Vertical		73	70	60	30
VSWR	≤2.0					
Front-To-Back Ratio	dB	>5	>8	>12	>10	
PIM, 3rd Order, 2 x 2 W	dBc	≤-153				
Input Power, maximum	watt	50				
Impedance	ohm	50				

MECHANICAL STUFF

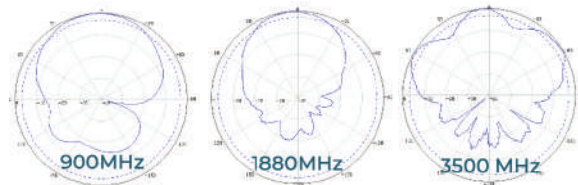
Connector Type	N-Female				
Dimensions, HxWxD	mm, in	165 x 155 x 50, 6.50 X 6.10 X 2.00			
Weight, without Mounting Kit	kg, lbs	0.8, 1.75			
Radome Material and Color	ABS, White				
Mounting Kit	4 Suction Mounts, Pole Mounting Bracket				
Operational Temperature	oC, oF	-55 to +60			
Ingression Protection Rating	IP65				
Cable Length	cm, in	6 Inches, 6 Ft or 20Ft			
Coax Type	RG174				

RADIATION PATTERNS

HORIZONTAL

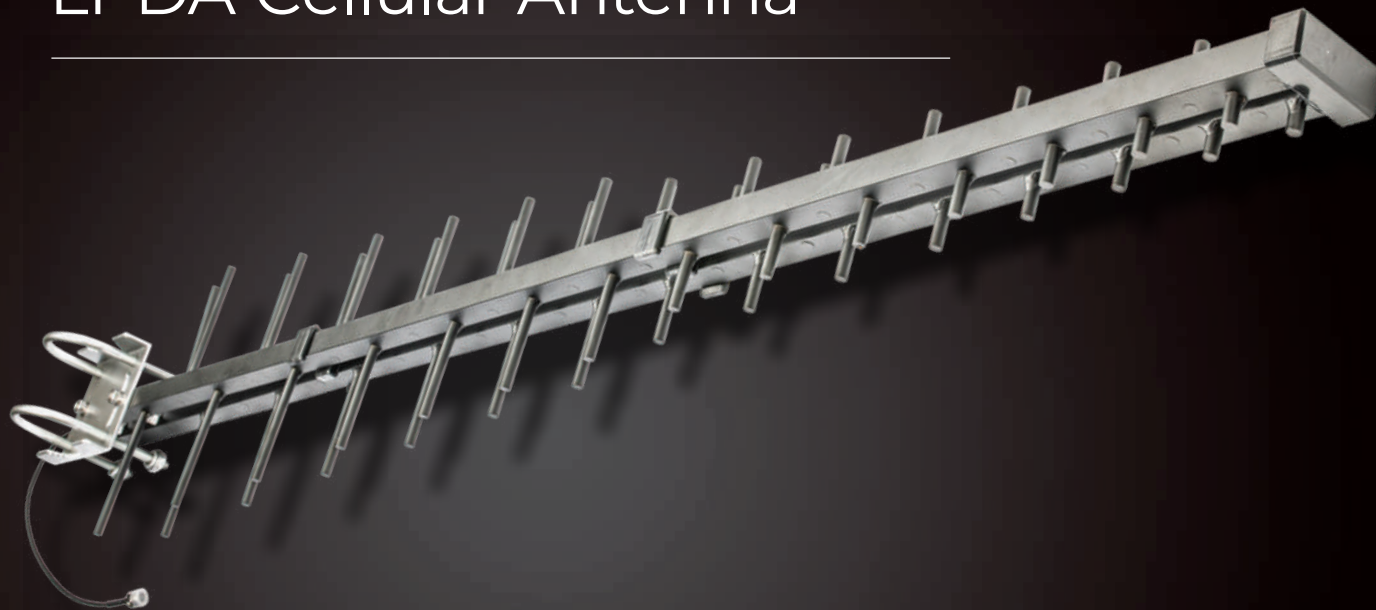


VERTICAL



The Arrow

LPDA Cellular Antenna



UP TO
+12dB
GAIN

698 - 2700
MEGA
HERTZ

REACHES
OVER **8**
KMS

N-FEMALE
CONNECTOR
PORTS

DIRECTIONAL
WIDEBAND
LPDA

Learn More at
BoltonTechnical.co.za



ELECTRICAL STUFF

Product Specifications may change without prior notice.

Item No.	BT974921		
Frequency Range	MHz	698-960	1710-2700
Gain	dBi	12	12
Polarization	Vertical		
Beam Width	Horizontal	deg	55±5
	Vertical		50±5
VSWR		≤2.0	
Front-To-Back Ratio	dB	≥20	
Input Power, Maximum	watt	50	
Impedance	Ohm	50	

MECHANICAL STUFF

Connector Type	N-Female		
Size W x H x D	mm, in	1100 x 200 x 47, 43.3 x 7.9 x 1.8	
Weight, without Mounting Kit	kg, lb	ø.94, 2.0	
Mounting Hardware	mm, in	ø38 ~ ø60, 1.5 ~ 2.3	
Reflector Finish	Aluminum		
Radome Material	Aluminum		
Operational Temperature	°C, °F	-40 ~ 60, -40 ~ 135	
Operational Humidity	%	< 95	
Cable Length	cm, in	30, 11.81	
Coax Type	RG141		

RADIATION PATTERNS

HORIZONTAL



VERTICAL



The Sector

High Gain Panel Antenna

UP TO
14.5
GAIN

698 - 2700
MEGA
HERTZ

DIRECTIONAL
CELLULAR ANTENNA

N-FEMALE
TERMINATION



Learn More at
BoltonTechnical.co.za



ELECTRICAL STUFF

Product Specifications may change without prior notice.

Item No.	BT974921		
Frequency Range	MHz	698-960	1710-2700
Gain	dBi	12	12
Polarization	Vertical		
Beam Width	Horizontal	deg	55±5
	Vertical		50±5
VSWR		≤2.0	
Front-To-Back Ratio	dB	≥20	
Input Power, Maximum	watt	50	
Impedance	Ohm	50	

MECHANICAL STUFF

Connector Type	N-Female		
Size W x H x D	mm, in	1100 x 200 x 47, 43.3 x 7.9 x 1.8	
Weight, without Mounting Kit	kg, lb	Ø.94, 2.0	
Mounting Hardware	mm, in	Ø38 ~ Ø60, 1.5 ~ 2.3	
Reflector Finish	Aluminum		
Radome Material	Aluminum		
Operational Temperature	°C, °F	-40 ~ 60, -40 ~ 135	
Operational Humidity	%	< 95	
Cable Length	cm, in	30, 11.81	
Coax Type	RG141		

RADIATION PATTERNS

HORIZONTAL



VERTICAL





Bolton Omni XL

Outdoor Omni Antenna

ULTRA
WIDEBAND
OMNI-DIRECTIONAL
ANTENNA

617 - 3800
MEGA
HERTZ

OMNI
DIRECTIONAL
4G&5G

HIGH
GAIN



Learn More at
BoltonTechnical.co.za

ELECTRICAL STUFF

Product Specifications may change without prior notice.

Item No.	BT974921		
Frequency Range	MHz	698-960	1710-2700
Gain	dBi	12	12
Polarization	Vertical		
Beam Width	Horizontal	deg	55±5
	Vertical		50±5
VSWR	≤2.0		
Front-To-Back Ratio	dB	≥20	
Input Power, Maximum	watt	50	
Impedance	Ohm	50	

MECHANICAL STUFF

Connector Type	N-Female		
Size W x H x D	mm, in	1100 x 200 x 47, 43.3 x 7.9 x 1.8	
Weight, without Mounting Kit	kg, lb	ø.94, 2.0	
Mounting Hardware	mm, in	ø38 ~ ø60, 1.5 ~ 2.3	
Reflector Finish	Aluminum		
Radome Material	Aluminum		
Operational Temperature	°C, °F	-40 ~ 60, -40 ~ 135	
Operational Humidity	%	< 95	
Cable Length	cm, in	30, 11.81	
Coax Type	RG141		

RADIATION PATTERNS

HORIZONTAL



VERTICAL



Building Antennas — External



Outdoor Omni Directional Antenna

Item No.	BT512372
Impedance, ohm	50
Connector Type	N-Female
Frequency Range	698 / 2700 MHz
Max Gain	Up to +4dBi



The Crossbow

Item No.	BT974976
Impedance, ohm	50
Connector Type	SMA-Male
Frequency Range	617-3800 MHz
Max Gain	Up to 11dBi
Coax Cable Length	5m

Building Antennas — External



Outdoor Yagi Antenna

Item No.	BT974884
Impedance, ohm	50
Connector Type	N-Female
Frequency Range	698-2700 MHz
Max Gain	Up to +9 dBi
Cable Length	30cm
Coax Type	RG141



Outdoor Panel Antenna

Item No.	BT512365
Impedance, ohm	50
Connector Type	N-Female
Frequency Range	698 - 2700 MHz
Polarization	Vertical
Max Gain	Up to +8 dBi
Cable Length	30cm
Coax Type	RG141



INDOOR BUILDING ANTENNAS





Building Antennas — Internal



Indoor Dome Antenna

Item No.	BT512396
Impedance, ohm	50
Connector Type	N-Female
Frequency Range	698 - 2700 MHz
Max Gain	Up to +5.1dB
Cable Length	34cm
Coax Type	RG141



Low Profile Dome Antenna

Item No.	BT512358
Impedance, ohm	50
Connector Type	N-Female
Frequency Range	698 - 4000 MHz
Max Gain	Up to +7dB
Cable Length	30cm
Coax Type	RG141

Building Antennas — Internal



Indoor Wall Mount Panel Antenna

Item No.	BT512501
Impedance, ohm	50
Connector Type	N-Female
Frequency Range	698 - 1990 MHz
Polarization	Vertical
Cable Length	30cm
Coax Type	RG141



Desktop Antenna

Item No.	Omni-0280-02
Impedance, ohm	50
Connector Type	SMA-Male
Frequency Range	698-2700 MHz
Polarization	Vertical
Line Length	60cm



LIGHTNING SURGE PROTECTORS

Lightning Surge Protectors

Lightning Surge protector for 50 Ohm devices. Make sure your cable fits the protector. Also, don't forget to ground them!



50 Ohm | Protect your 50 Ohm accessories and devices

Item No.	BT512068
Frequency	Up to 2500 MHz
Attenuation	Less than 0.2 dB
Impedance	50 Ohm
Connectors	N-Female
N-Connectors	Replaceable Fuse Cartridge



CABLES



LMR® 400 Equivalent Cables



BT512112

60cm Bolton400 Low Loss Cable
N-Male To N-Male
PE, Black Jacket
(Equivalent to LMR®400)



BT512532

10m Bolton400 Low Loss Cable
N-Male to N-Male
PE, Black Jacket
(Equivalent to LMR®400)



BT512549

15m Bolton400 Low Loss Cable
N-Male to N-Male
PE, Black Jacket
(Equivalent to LMR®400)



BT974723

500m Bolton400 Ultra Low-Loss
Cable Spool, PE, No Connectors
Black Jacket
(Equivalent to LMR®400)



LMR® 240 Equivalent Cables



BT974754

500m Bolton240 Low-Loss Cable
Spool, PE, No Connectors
Black Jacket
(Equivalent to LMR®240)

LMR® 600 Equivalent Cables



BT974747

500m Bolton600 Ultra Low-Loss
Cable Spool, PE, No Connectors
Black Jacket
(Equivalent to LMR®600)



CONNECTORS & ADAPTERS

Connectors & Adapters



BT512198
N-Male to N-Male
Barrel Connector



BT596251
N-Female to N-Female
Barrel Connector



BT974839
N-Male to SMA Female
Barrel Connector



BT512051
LMR® 400 N-Male Crimp
Connector



BT512204
N-Male Bolton600 Crimp
Connector



BT512518
N-male Crimp for LMR240
Connector



BT512525
SMA Male Crimp for LMR 240
Connector



COUPLERS

Couplers



6 dB Coupler | 698-2700 MHz | Low-PIM | N-Female

Item No.	BT512402
Coupled Loss	-0.97 decibels (dB)
Power	50 W avg.
Directivity	19 dB minimum
Ingress Protection	IP65
Connector	N-Female
Impedance	50 Ohm



10 dB Coupler | 698-2700 MHz | Low-PIM | N-Female

Item No.	BT512419
Frequency	698-2700 MHz
Insertion Loss	-0.96 dB
Connectors	N-female
Maximum Power	200 W
Impedance	50 Ohm



SPLITTERS



Splitters (50 Ohm)



Low-PIM 2-Way Splitter | 698-2700Mhz 50 Ohm (Wilkinson Style)

Item No. BT512440

Low Insertion Loss and VSWR

High Isolations

Widely used in IBS & DAS

Allows you to add two indoor antennas to a cellular system



Low-PIM 3-Way Splitter | 698-2700Mhz 50 Ohm (Wilkinson Style)

Item No. BT512433

Low Insertion Loss and VSWR

High Isolations

Widely used in IBS & DAS

Allows you to add three indoor antennas to a cellular system



Low-PIM 4-Way Splitter | 698-2700Mhz 50 Ohm (Wilkinson Style)

Item No. BT512426

Low Insertion Loss and VSWR

High Isolations

Widely used in IBS & DAS

Allows you to add four indoor antennas to a cellular system

Need more info?

If you have a question about our products, need help with equipment, or just want to talk to an expert, contact us!

Contact Us:

Bolton Technical South Africa

www.boltontechnical.co.za

sales@boltontechnical.co.za

Call Us

JHB 011 749 3085

CPT 021 879 3057



Warranty Overview

1 Year Warranty

WilsonPro and weBoost signal boosters are warranted for one (1) year against defects in workmanship and/or materials. Warranty cases may be resolved by returning the product directly to the reseller with a dated proof of purchase.

Signal boosters may also be returned directly to the manufacturer at the consumer's expense, with a dated proof of purchase and a Returned Material Authorization (RMA) number supplied by weBoost. weBoost shall, at its option, either repair or replace the product.

This warranty does not apply to any signal booster determined by weBoost to have been subjected to misuse, abuse, neglect, or mishandling that alters or damages physical or electronic properties.

Replacement products may include refurbished weBoost products that have been recertified to conform with product specifications.

RMA numbers may be obtained by contacting Customer Support.

To start your return:

1. Contact Customer Service at +27-11-749-3085 for troubleshooting and possible return/exchange of product.
2. After booster information (serial number, model number, date of purchase) is provided, an RMA number is given to the customer.
3. Once shipping information is provided to a Customer Service agent, the agent explains to customer that they can ship the returning product(s) to the following address:

Head Office Address:
5 Rydal Lane
JT Business Park
Unit 4, Longlake, 1609
4. Once product(s) arrives at our facility, amplifiers will be tested and evaluated for replacement.



Product Specifications may change without prior notice.